

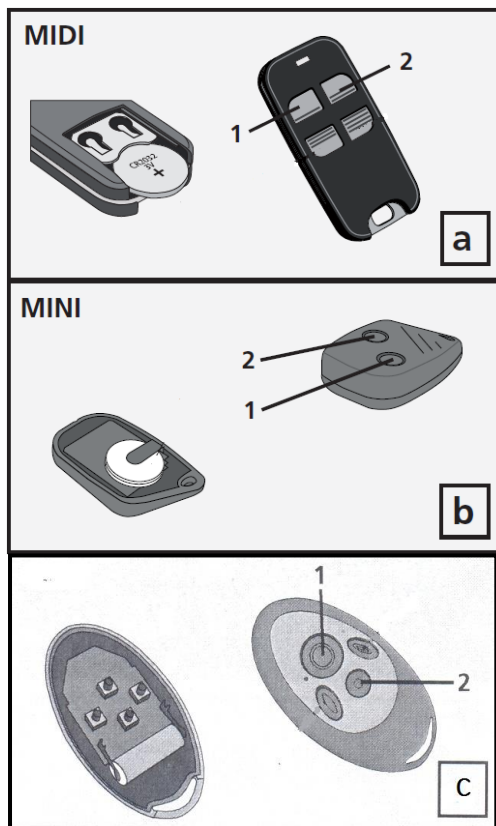
## TS MINI/TS MIDI STEEL REMOTE INSTRUCTIONS

### **HEALTH & SAFETY: THESE PROCEDURES ARE TO BE CARRIED OUT BY A COMPETENT PERSON ONLY**

#### **PROGRAMMING A REMOTE**

##### ***Situation 1***

**You have got at least one working remote and want to register the new remote to be used in addition:**

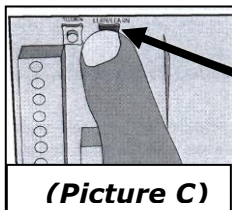


- 1) Open the garage door at least half way and close it again using the existing remote
- 2) You now have 10 seconds to press buttons 1 and 2 on the existing remote simultaneously for approx. 3 seconds. **(shown in picture A B & C)**
- 3) The light bulb on the operator will start flashing – now release the two buttons
- 4) Take the new remote and press the button you want to use for the operator and the operators light bulb will stop flashing
- 5) On the next push of the button on the new remote the door will operate.

##### ***Situation 2***

**You do not have a working remote:**

- 1) Open the operator's plastic cover (one Philips screw will need to be undone for TS75 and TS100 operators or remove the rear plastic cover for TM and RP series operators)



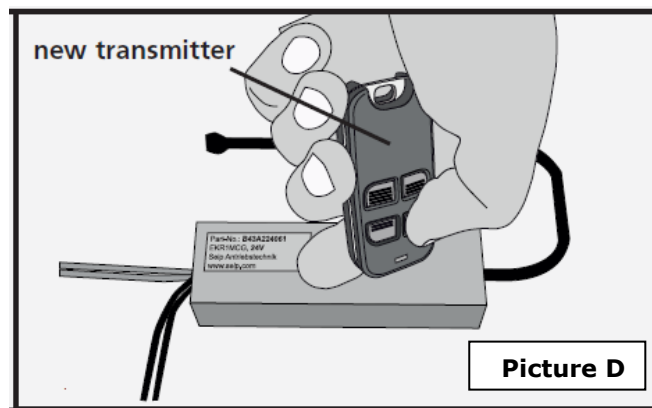
- 2) Press the RED learn button on the printed circuit board for approx. 3 seconds **(shown in picture C)** until the light bulb on the operator starts flashing then release the button
- 3) Take the new remote and press the button you would like to use
- 4) The light bulb on the operator will stop flashing
- 5) On the next push of the button on the new remote the door will operate

# HEALTH & SAFETY: THESE PROCEDURES ARE TO BE CARRIED OUT BY A COMPETENT PERSON ONLY

## Situation 3

When you are using an operator with an external mini receiver:

- 1) Hold the new remote so it is physically touching the plastic case on the external mini receiver by the black antenna wire (**shown in picture D**)



- 2) Press the selected button that you wish to use on the new remote (e.g. shown in the picture) until the LED lamp on the external mini receiver comes on. Now release the button of the new remote immediately (**shown in picture D**)
- 3) Press the same button again on the new remote. The LED lamp will now switch off. This is the button you will use for operation.

## CLEARING THE REMOTE MEMORY

In the event of lost or stolen remotes it is recommended that you clear the memory

- 1) Open the operator's plastic cover (one Philips screw will need to be undone for TS75 and TS100 operators or remove the rear plastic cover for TM and RP series operators)
- 2) Press the RED learn button on the printed circuit board for approx. 15 seconds until the LED lamp next to the RED learn button comes on then release the button
- 3) The operators memory is now cleared so any previously programmed remotes will be wiped

<b>Batteries</b>	
<b>TS Midi Steel SKR433-3 Part number. B43A023004-3</b>	<b>a</b>
<b>1 x 3V battery is supplied</b> <b>CR2032</b>	
<b>TS Mini SKRJ433 Part number. B43A024002</b>	<b>b</b>
<b>2 x 3V batteries are supplied</b> <b>CR1616</b>	
<b>Old batteries must be disposed as to national regulations</b>	