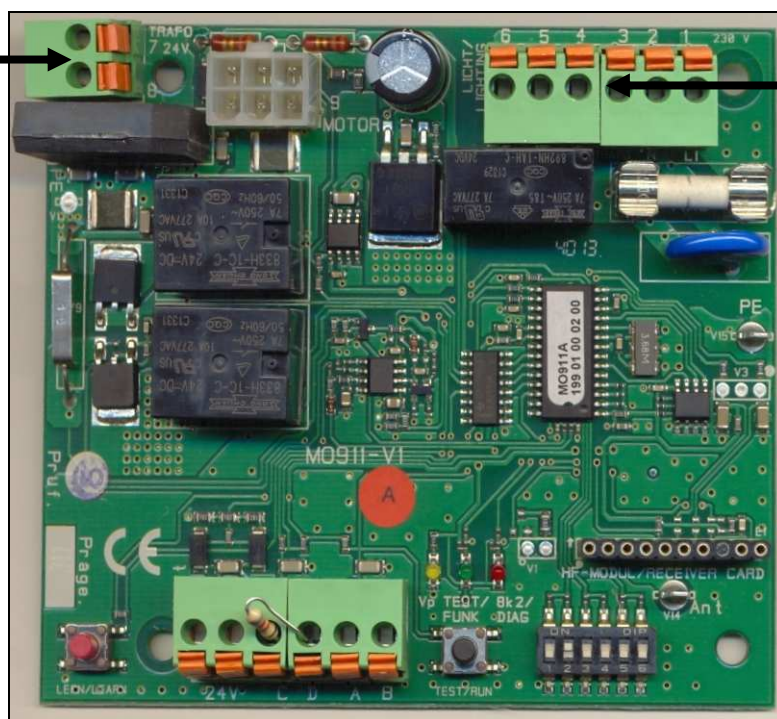


CHANGING A RP60A/TM60/TM80 TRANSFORMER INSTRUCTIONS

HEALTH & SAFETY: THESE PROCEDURES ARE TO BE CARRIED OUT BY A COMPETENT PERSON ONLY.

MAINS POWER NEEDS TO BE SWITCHED OFF BEFORE ANY CHANGES

Terminals
7 and 8



Terminals
3 and 4

- 1) Completely remove the operator's light cover and grey plastic motor cover
- 2) Before removing the old transformer, please study wiring positions for a few moments
- 3) Carefully disconnect the old transformer from the printed circuit board by carefully pressing the orange wire clamps to release the wires
- 4) The transformer (see below) has 4 wires (2 x black and 2 x white), connect to the printed circuit board as follows:-



Black wire (230v AC) to terminal **3**
Black wire (230v AC) to terminal **4**
White wire (24v AC) to terminal **7**
White wire (24V AC) to terminal **8**

- 5) Once the new transformer is connected, replace the operator's light cover and grey plastic motor cover
- 6) Now switch the operator back on at the mains power, and use as normal